

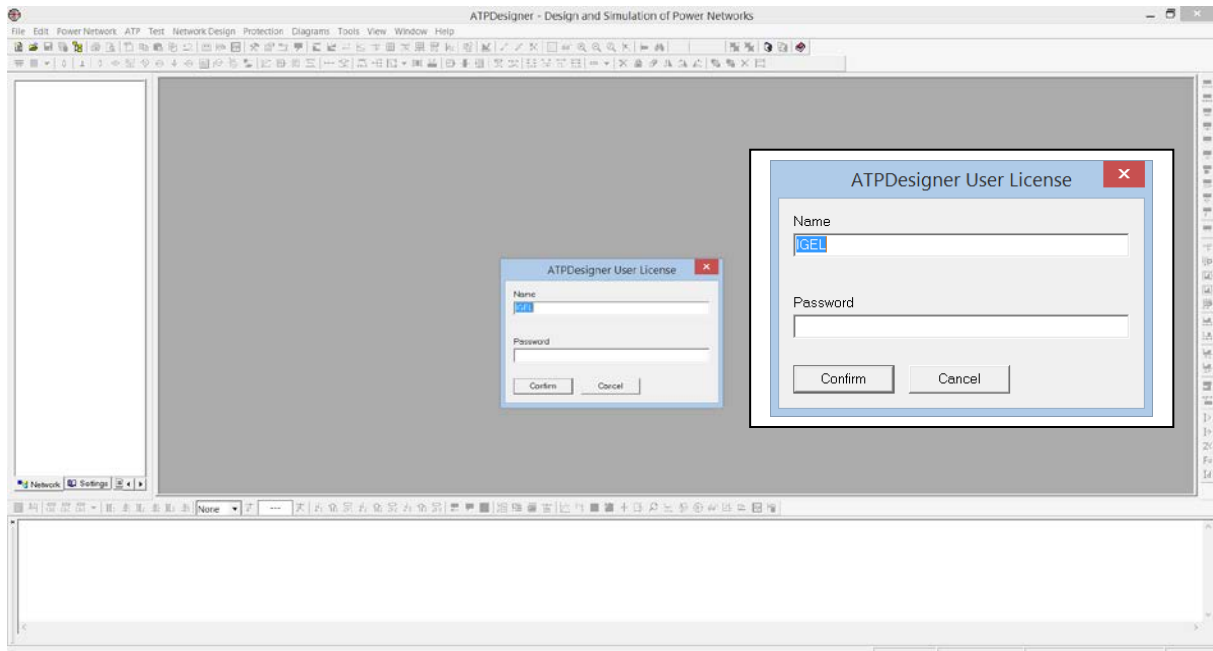
Time Limited License for ATPDesigner

If ATPDesigner has been installed:

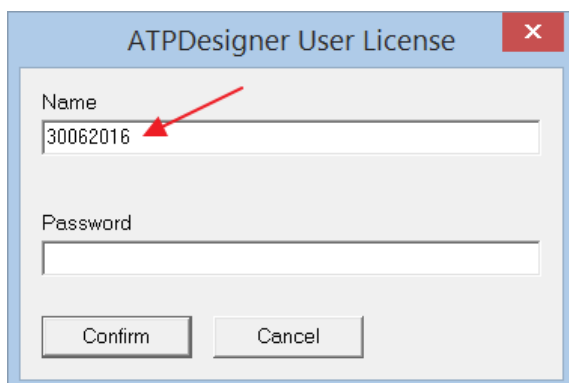
1. Delete the license file **ATPDesignerReg.ini** stored in the folder **c:\atpdesigner\exe**
2. Start the program **atpdesigner.exe** stored in **c:\atpdesigner\exe**

After the first installation of ATPDesigner:

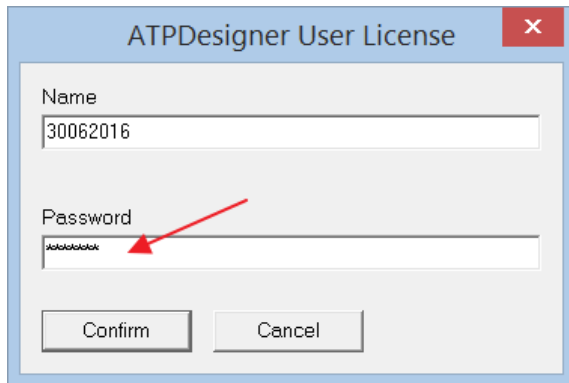
3. ATPDesigner program opens the **ATPDesigner User License** dialog
4. Delete the **Name** displayed in the first line of the dialog



5. Insert the expiration date e.g. **30062016** in the line **Name**



6. Insert the license code in the line **Password**

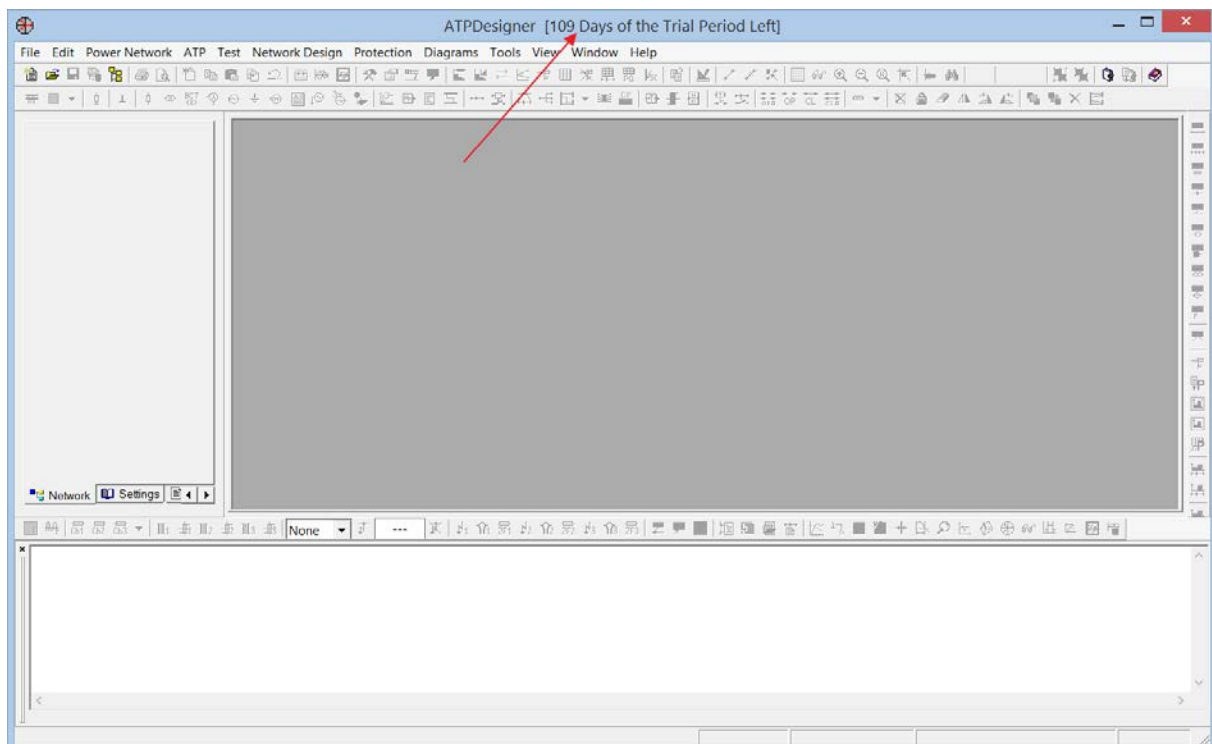


The image shows a dialog box titled "ATPDesigner User License". It has a "Name" field containing "30062016" and a "Password" field containing "*****". A red arrow points to the "Password" field. Below the fields are "Confirm" and "Cancel" buttons.

7. Press the **Confirm** button to close the dialog.

The license file **ATPDesignerReg.ini** will be automatically created and stored in the folder **c:\atpdesigner\exe**.

The text in the header: **[109 Days of the Trial Period Left]**



The **About** – dialog can be opened using the main menu **Help**, sub menu **About**. The expiration date of the license will be displayed in the line **Licensed for**.

